

ENVIS Madhya Pradesh Newsletter

Vol. – 6, Issue - 3
July - September, 2008



FROM THE DESK OF ENVIS COORDINATOR

As we all know that Madhya Pradesh is situated at the heart of India. Countless monuments, exquisitely carved temples, stupas, forts and palaces are scattered all over the state. The natural beauty of Madhya Pradesh is equally diverse. Spectacular mountain ranges, meandering rivers and miles and miles of thick forests offering a unique and excellent panorama of wildlife in herbaceous surroundings. Madhya Pradesh is easily accessible from any part of India.

ENVIS-Madhya Pradesh Newsletter is intended to inform the readers about the wild life in Madhya Pradesh. This issue comprehensively covers important wildlife sanctuaries and national parks in MP. I hope that our colleagues in various educational institutions and other friends will find this newsletter useful and also, it would contribute to the public awareness along with a very **HAPPY INDEPENDENCE DAY** to all the readers of ENVIS-Madhya Pradesh newsletter.

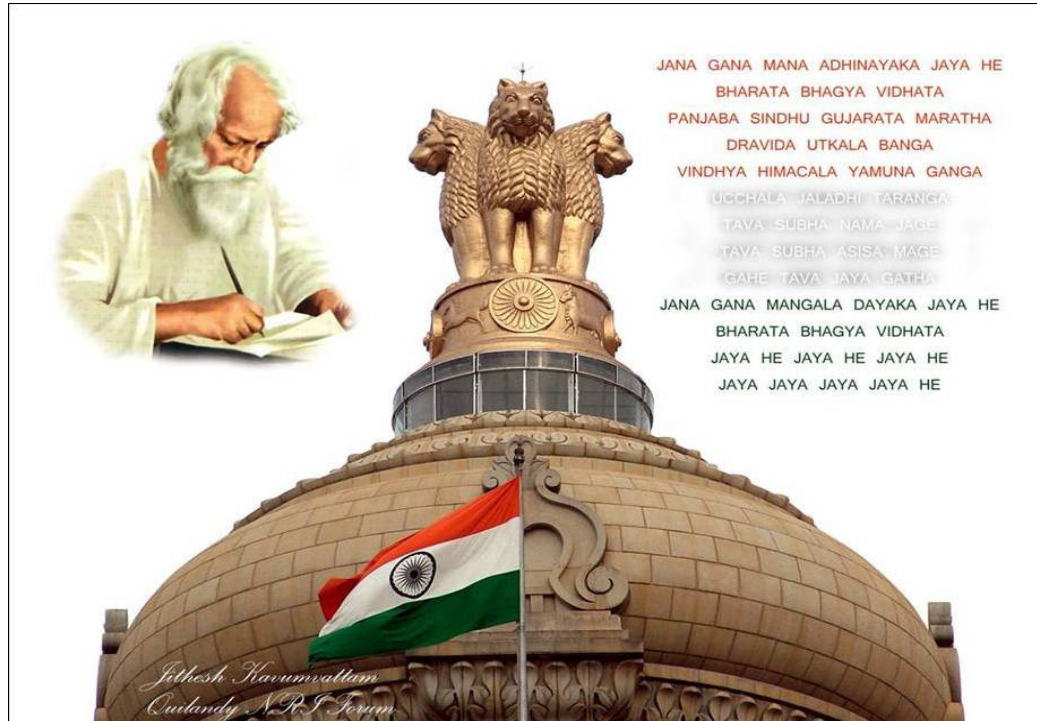
Dr. Rakesh Dubey
ENVIS Coordinator
&
Director, DMI

INSIDE THE ISSUE.....

- **Wild life in MP**
- **Wild Life Sanctuaries in MP**
- **National Parks in MP**
- **Conference & Training programmes**
- **New Clippings**



**UNESCO (United Nations Educational, Scientific and Cultural Organization)
Announces INDIAN NATIONAL ANTHEM
as the BEST National Anthem in the World**



Ads by Google

UNESCO Announces Indian National Anthem 'Jana Gana Mana' as the Best National Anthem

Friday, September 19, 2008

Indian National Anthem "Jana Gana Mana" written and composed by Rabindra Nath Tagore has been chosen as the World's Best National Anthem by UNESCO.

Jana Gana Mana Written in Sanskritised Bengali, it is the first of five stanzas of a Brahmo hymn composed and scored by Nobel laureate Rabindranath Tagore.

It was first sung at the Calcutta Session of the Indian National Congress, on 27 December 1911. Jana Gana Mana was officially adopted by the Constituent Assembly as the Indian national anthem on January 24, 1950. The music for the "current version" is said to be derived from a composition for the song by Ram Singh Thakur, although some dispute this.

A formal rendition of the national anthem takes about forty-eight to fifty-two seconds.



WILDLIFE IN MADHYA PRADESH

Madhya Pradesh is virtually a heaven for the wildlife lovers as the state is rich with a huge variety of fauna. There is something magical in the woods of Madhya Pradesh that beckons people here again and again. It is here that one has few of the most spectacular sightings of endangered species in the many celebrated national parks that are scattered throughout the state. Most important parks in Madhya Pradesh are Kanha National Park and Bandhavgarh National Park.



The parks are there, not merely to entertain us but to preserve the precious biodiversity that keeps this world moving forward in a balance thus stabilizes the ecosystem. So a visitor to these amazing lands, should keep in mind the precaution that have to be taken before your trip through the wild. Always follow the rules of the park that ensures your safety as well as the safety of the animals.

WILDLIFE SANCTUARIES IN MADHYA PRADESH



Madhya Pradesh is a veritable haven for wildlife. In its lush forests, the tiger prowls and the spotted deer, the blue-bull and the gaur roam free. The barasingha has been saved from extinction and its numbers have multiplied in Kanha National Park. The sal and bamboo forests of Kanha, Bandhavgarh, Panna, Pench, Satpura and many other National Parks and Sanctuaries are teeming with all kinds of wildlife and many hundred species of birds. In Madhya Pradesh, the old thrill of the jungle lives on! One third of the land is forested, offering a unique and exciting panorama of wild life. Especially in the Vindhya-Kaimur and the Satpura and Maikala ranges and the Baghelkhand plateau. The old princely families were enthusiastic "sportsmen".

The great hunting families have given the country its great wildlife parks. The chances of seeing them in their natural avocations, is higher than anywhere else in the world. The chances of seeing a big cat, a tiger or lion within naked lens' reach, are extremely high. And the fact that they are not frightened of you lets you make observations and take pictures, which only dedicated naturalists could have hoped for just a decade ago. Kanha and Bandhabgarh national parks have been very famous national parks around the world. The king of the forest may be easily sighted at Kanha and Bandhavgarh. Equally at home in the Jungles of Kanha and Bandhavgarh is the Gaur who does not fear the tiger. Another native is the Barasingha the only swamp deer who has adapted to hard ground.

Chitals (spotted deer) can be sighted in hundreds. Sloth Bear, the leopard and the buffalo are much less common. At times one is surprised that wild life has survived so well despite the decades of senseless slaughter indulged in by the so-called big game hunters. Many of the princes marked out areas as their personal hunting reserves: Shivpuri near Gwalior for instance, which has served in recent years as the nucleus of the wild life park and where Madhav National park is particularly rich in many species of deer and famous for its white (albino tic) tigers. Pench National park is also an upcoming national park in Madhya Pradesh.





Name of Sanctuaries	Area (sq km)	Fauna found in Sanctuaries
Kheoni	122.70	Leopard, Bear, Chital, Sambar, Nilgai.
Narsinghgarh	57.19	Leopard, Chital, Sambar, Wild Boar, Peacock, Grey Horn Bill.
Gandhisagar	368.62	Leopard, Chital, Chinkara, Barking Deer, Nilgai, Water Birds.
Bori	518.00	Tiger, Leopard, Sambar, Chital, Gaur, Bear, Wild Boar.
Pachmarhi	461.85	Tiger, Leopard, Sambar, Chital, Gaur, Chinkara, Bear, Nilgai.
Dubri (Sanjay)	364.69	Tiger, Leopard, Sambar, Chital, Gaur, Chinkara, Nilgai, Muntjac.
Badalkhoh	104.35	Tiger, Leopard, Sambar, Chital, Nilgai.
Gomardah	277.82	Tiger, Leopard, Sambar, Chital, Bear, Nilgai, Muntjac.
Ratapani	688.79	Tiger, Leopard, Sambar, Chital, Nilgai, Chinkara.
Singhori	287.91	Tiger, Leopard, Sambar, Chital, Nilgai, Black Buck.
Barnawapara	244.66	Tiger, Leopard, Sambar, Chital, Gaur, Wild Boar, Muntjac.
Sitanadi	553.36	Tiger, Leopard, Sambar, Chital, Nilgai, Bear, Gaur, Muntjac.
Noradehi	1034.52	Tiger, Leopard, Chital, Sambar, Nilgai, Wild Dog, Black Buck, Chinkara.
Achanakmar	551.55	Tiger, Leopard, Gaur, Chital, Wild Bear, Sambar.
Pench	449.39	Tiger, Leopard, Chital, Gaur, Sambar, Nilgai, Jungle Fowl.
Samar sot	340.35	Tiger, Leopard, Gaur, Chital, Sambar.
Natioanal Chambal	320.00	Gharial, Crocodile, Turtle, Dolphin, Otter, Migratory Birds.



NATIONAL PARKS IN MP

Madhya Pradesh is the heart of India and also home of some of finest national parks. Most of the national parks in Madhya Pradesh are famous for tiger and elephant safari. Below are the list of some of the important national park in Madhya Pradesh.

Name of National Parks	Area (sq km)	Fauna found in National Parks
Kanha	939.94	Tiger, Leopard, Gaur, Chital, Sambar, Nilgai, Chinkara, Barking Deer, Barasingha, Wild Boar.
	448.00	Tiger, Leopard, Gaur, Chital, Sambar, Nilgai, Chinkara, Barking Deer, Wild Boar.
Madhav	337.00	Leopard, Chital, Sambar, Nilgai, Chinkara, Black Buck, Chausingha, Wild Boar.
Sanjay	1938.01	Tiger, Leopard, Chital, Sambar, Nilgai.
Indrawati	1258.37	Tiger, Leopard, Gaur, Chital, Sambar.
Van Vihar	4.45	Zoological Park.
Panna	542.66	Leopard, Wild Boar, Chital, Tiger, Deer, Sambar.
Satpura	524.37	Tiger, Leopard, Sambar, Chital, Nilgai, Gaur, Bear.
Kanger	200.00	Tiger, Leopard, Sambar, Chital, Singing Hill Maina.
Fossil	0.27	Plant-Fossils.
Pench	293.00	Tiger, Leopard, Chital, Gaur, Sambar, Wild Boar, Muntjac, Nilgai.

KANHA NATIONAL PARK

Kanha National Park is situated in the eastern part of Madhya Pradesh and has been considered as the best national park in Asia. It covers an area of around 2000 sq. km and is covered by Satpura Ranges. The grasslands are the best place where you spot most of the wildlife. Kanha is famous for Tigers as this is one of the oldest parks to have been included in Tiger Project. A sight of the legendary Sher Khan of Rudyard Kipling's Jungle Book will definitely leave you speechless but



there is more to Kanha than tigers. The park is also home to the rare Barasingha. Seeing them strutting around, flaunting their antlers like crown on their head is a view of fantasies. Other animals that make Kanha one of the best parks in India are Wild Boar, Gaur, Chital, Indian wolf and many more. The park is also a great nesting ground for many birds species. Around 300 species of birds, both resident and migratory have been spotted here. Kanha's sal and bamboo forests, rolling grasslands and meandering streams stretch over 940 sq km in dramatic natural splendour. Wildlife species exists today in Kanha National Park, which forms the core of the Kanha Tiger Reserve created in 1974 under Project Tiger. The park is the only habitat of the rare hardground barasingha (Cervus Duvaceli Branderi). In the 1930s, the Kanha area was divided into two sanctuaries: Hallon and Banjar, of 250 sq km and 300 sq km each. Though one of these was subsequently disbanded, the area remained a protected one until 1947. Depletion of the tiger population in the years that followed led to the area being made an absolute sanctuary in 1952. By a special statute in 1955, Kanha National Park came into being. Since then, a series of stringent conservation programmes for the protection of the park's flora and fauna has given Kanha its deserved reputation for being one of the finest and best administered National Parks in Asia, an irresistible attraction for all wildlife lovers and a true haven for its animal and avian population.



Some Important Places in Kanha National Park

Bamni Dadar: Known as Sunset Point, this is one of the most beautiful areas of the park, from where a spectacular sunset can be watched. The dense Kanha's forests can best be seen from here. Animals that can be sighted around this point are typical of the mixed forest zone: sambar, barking deer, gaur and the four horned antelope.

Mammalian Species: Kanha has some 22 species of mammals. Those most easily spotted are the striped palmsquirrel, common langur, jackal wild pig, chital or spotted deer, barasingha or swamp deer, samhar and blackbuck.

Less commonly seen species are: Tiger, dhole or Indian wild dog, barking deer and Indian bison or gaur. Patient watching should reward the visitor with a sight of Indian fox, sloth bear, striped hyena, jungle cat, panther,

mouse deer, chausingha or four-horned antelope, nilgai, Hardground Barasingha is found only at Kanha.

Very rarely seen are: Wolf, which lives in the far east of the park; chinkara, to be found outside the park's northern boundary; Indian pangolin, the smooth Indian otter and the small Indian civet.

Avian Species: Kanha has some 200 species of birds. Watchers should station themselves in the hills, where the mixed and bamboo forests harbour many species, and in the grassy forest clearings. Water birds can be seen near the park's many rivulets and at Sarvantal, a pool that is frequented by wafer birds and the area in front of the museum. The sal forests do not normally yield a sight of Kanha's avifauna. Early mornings and late afternoons are best for bird watching; binoculars are an invaluable aid to the watcher.

BANDHAVGARH NATIONAL PARK

Bandhavgarh was recognized as a national Park in the year 1968. Situated in the Umaria district, the park covers an area of 448 sq. km. The Park has a series of ridges running through it. Initially just 105.40 sq. km. in area, Bandhavgarh with 25 resident tigers, was noted for its high-density tiger population. Today, it has been extended to an area of 437 sq. km. About half the Park is covered with

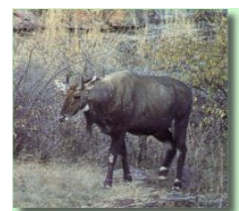
fine stands of sal, while mixed forests are found in the higher reaches of the hills. Stretches of bamboo and grasslands extend to the north. The main viewing area is still in the core of the Park with its 32 picturesque, wooded hills. An ancient fort up on a precipice, 800 metres high, dominates the Park. Bandhavgarh National Park in the Umaria district of Madhya Pradesh is has spellbinding location between the Vindhayas and Satpura mountain ranges. This wetland plateau is the terrain of the beautiful and timid animals to the most ferocious of tigers. This forest was declared as a national park in the year 1968 and then on strenuous



efforts have been taken by the government to preserve it. Sal is one tree than can be found in abundance while there are mammoth stretch of Bamboo forest and grasslands. The lush vegetation provides an excellent opportunity to the animals to hide away from the human gaze. The national park attracts huge amount of tourist participation, a visit to the park will give you a chance to decamp from the prosaic life of the city and towns. Pamper yourself with a little spice in the

Some important Fauna & Flora in Bandhavgarh National Park

Nilgai caves excavated from the cliffs to the north of the fort Brahmi inscriptions here date back to the 1st century BC. A hunting reserve of the royal family of Rewa in more recent times, Bandhavgarh was declared a Park in 1968. This is where the famous white tigers of Rewa were discovered. Wandering through the Park on elephant back, the chances of seeing a tiger are quite good. Also to be seen here are nilgai, chausingha, chital, chinkara, wild boar and sometimes a fox or jackal.



Other inhabitants of the Park include the muntjac, jungle cat, ratel, hyena, porcupine, the rhesus macaque and the black-faced langur. About 150 species of birds are also found here and include the migratory birds that arrive in winter like the steppe eagle and various water-birds. It is possible to climb up to the Bandhavgarh fort for a breathtaking bird's-eye view of the Park and there is also a small population of black buck that lives here, protected from the predators below. The forest of Bandhavgarh can be classified as moist deciduous, and the National Park holds all those animal species which are typical of this habitat in Central India. Certain areas of the Park (particularly the south and west) are drier in character, and hold such species as the nilgai and the chinkara. Sal forest occurs throughout the valleys, giving way to mixed forest which occurs where the soil is of relatively poor quality on the upper hill slopes, on rocky outcrops and in the south and west. Grassy meadow patches occur in the valley and along the nalas.



There are more than 22 species of mammals and 250 species of birds. Common langurs and rhesus macaque represent the primate group. Carnivores include the Asiatic Jackal, Bengal fox, sloth bear, ratel, grey mongoose, striped hyena, jungle cat, leopard and tiger. The artiodactyls frequently sighted are wild pig, spotted deer, sambar, chausingha, nilgai, chinkara and gaur. Mammals such as dhole, the small Indian civet, palm squirrel and lesser bandicoot rat are seen occasionally. Among the herbivores, gaur is the only coarse feeder. The vegetation along streams and marshes is rich in birdlife. The common ones are little grebe, egret, lesser adjutant, sarus crane black ibis, lesser whistling teal, white-eyed buzzard,

black kite, crested serpent eagle, black vulture, Egyptian vulture, common peafowl, red jungle fowl, dove, parakeet, kingfisher and Indian roller. Reptilian fauna include cobra, krait, viper, ratsnake, python, turtle and a number of lizard varieties, including varanus.

PANNA NATIONAL PARK

Panna National Park is situated in the Chhatarpur District and was established in the year 1981 and was made a part of Project tiger in the year 1994. The park covers an area of around 543 sq. km. The landscape of the park generally consists of vast plateaus, savannah grasslands and far spread teak forests. During a safari, you can spot animals like tiger, Panther, crocodiles, Bear, spotted Dear, hyena, jackal and many more endangered species. Elephant safari is the most exotic way of exploring this sedate yet striking National Park. More than one third of the area of Madhya Pradesh is under thick forest cover which offers a panorama of wildlife treasures. Home to exhilarating range of wildlife, the state attracts hordes of tourists and wildlife enthusiasts. Be a Part of a jungle safari and feel the excitement of being in the court of King of the Jungle.



CONFERENCE AT DAVOS, SWITZERLAND

Dr. Rakesh Dubey, Director, DMI attended the International Disaster and Risk Conference (IDRC) at Davos, Switzerland during August 25-29, 2008. During conference he gave a presentation on "Public-Private Partnership – Key for Business Continuity by Integral Risk Management" on August 27, 2008. In his presentation the focus was made on the importance of risk assessment and management for promoting public - private partnership so that an industry can run the plant in a comfortable way.



An article entitled on "***Toe the line for behavioural changes: a capacity development system for disaster risk management***" by Dr. Rakesh Dubey was also published in the Risk Wise publication by Tudor Rose, U.K.

TRAINING PROGRAMME ON CHEMICAL EMERGENCY PLANNING, PREPAREDNESS AND RESPONSE

Disaster Management Institute (DMI), Bhopal organised a state level training programme on "Chemical Emergency Planning, Preparedness and Response" at Bhopal during August 18 – 22, 2008 with the financial support of GTZ-ASEM, Germany. The programme was inaugurated by Mrs.

Deepti Gaur-Mukerjee, IAS, Executive Director, DMI. Participants from MPPCB, DIHS, M. P. and Department of Industries, Govt. of M.P. along with a few process engineers from industries in Madhya Pradesh were present. The programme was concluded on 22nd August and at the end of the programme, all the participants were awarded certificates. Shri P. Chaudhury, CIF, Gujarat was the chief guest during the valedictory session. The programme was coordinated by Shri Sudheer Dwivedi, Dy. Director, DMI.



To,

.....
.....
.....

If undelivered, please return to;
ENVIS–MP, Disaster Management Institute
Paryavaran Parisar, E-5, Arera Colony, P.B. No. 563,
Bhopal-462016
Phone: 0755-2466715, 2461348, 2461538,
Fax: 0755-2466653
Website :- www.mpennis.nic.in
Email: mn@envis.nic.in

Published by:

**ENVIS – Madhya Pradesh
Disaster Management
Institute**
Paryavaran Parisar,
E-5, Arera Colony, P.B.No. 563,
Bhopal-462016
Phone: 0755-2466715, 2461348,
2461538
Fax: 0755-2466653

Publisher & Editor– in–Chief:
Ms. Deepti Gaur Mukerjee, IAS
Executive Director, DMI

Editor:
Dr. Rakesh Dubey
ENVIS Coordinator & Director,
DMI

Editorial Team:
MR. Jitendra Singh, IO
MS. Neelima Sawarkar, DEO

Disclaimer:

The information in this newsletter has been compiled from various sources and does not necessarily depict the views of the ENVIS-MP or host Institute.

Source :-

www.indialine.com, www.travelmasti.com.